



Determinants that Influence the Informality of the Vulnerable Area of the Briceño-San Vicente Beach Profile



Andrés Aladino Alcívar-Intriago^a
Fátima Acnabel Valencia- Castro^b
María Gabriela Zambrano-Gómez^c
Silvia Alexandra Moreira-Castro^d
Ana Katerine Palacios-Dueñas^e

Article history:

Submitted: 09 June 2024

Revised: 18 July 2024

Accepted: 27 August 2024

Keywords:

informality;
interactive;
residential;
territorial;
vulnerability;

Abstract

A correct vulnerability assessment will allow, in the long term, to make better decisions when making comprehensive coastal plans, planning the construction of sites for industry, ports, tourist housing. The objective was to analyze the determinants that influence the informality of the vulnerable area of the Briceño beach profile of the San Vicente canton, province of Manabí; in the period from March to June 2023. The bibliographic review and field, experimental and transectional research were used as methodology. The information was obtained through participatory observation and the survey was used as an instrument, designed by the proposed variables. The result was that, of the 30 families surveyed, segregation and informality are three-dimensional phenomena: Residentially: 53% of the families live in a precarious state, 30% in a regular state and 17% in a state of satisfactory housing; That is to say, they do not have architectural spatial organization, nor standardized setbacks between homes. Territorially, it is related to the fact that 87% of the properties do not have a property title, and interactively, 87% of these homes acquire water through the tanker service and 97% use a toilet with drainage into a septic tank, inducing the contamination of the beach profile soils.

International research journal of management, IT and social sciences © 2024.

This is an open access article under the CC BY-NC-ND license

(<https://creativecommons.org/licenses/by-nc-nd/4.0/>).

Corresponding author:

Andrés Aladino Alcívar-Intriago,
Universidad Laica Eloy Alfaro de Manabí - Extensión Chone, Ecuador.

Email address: andresa.alcivar@uleam.edu.ec

^a Universidad Laica Eloy Alfaro de Manabí - Extensión Chone, Ecuador

^b Departamento de Posgrado, Universidad Laica Eloy Alfaro de Manabí - Extensión Chone, Ecuador

^c Universidad Laica Eloy Alfaro de Manabí - Extensión Chone, Ecuador

^d Universidad Laica Eloy Alfaro de Manabí - Extensión Chone, Ecuador

^e Universidad Laica Eloy Alfaro de Manabí - Extensión Pedernales, Ecuador

1 Introduction

Segregation and informality are three-dimensional phenomena: residential (where the individual lives), territorial (where the individual carries out his daily activities) and interactive (the relationships established by social networks) (Schnell, 2019). Castells (1989), for his part, develops the concept of "informational society", to define the essence of today's society, making reference to the flows of information and the connection through networks that would put the stamp of today, generating transformations. economic, sociocultural, territorial and political.

Social vulnerability measures the level of sensitivity of the population and social groups to risks, such as their ability to respond and recover from the effects of dangers (Cutter & Finch, 2008). They recognize that ethnicity, socioeconomic level and gender; as well as age, migration and housing ownership are substantive characteristics to determine vulnerable populations. The importance of having an analysis project of the vulnerable area of the Briceño beach profile contributes to the social and community process; to the progress of the urban environment and development at the regional level; always in favor of contributing to improving the quality of life of its inhabitants.

Hence, the need to study these territorial facts without ignoring the social life that occurs there, which requires an analytical balance of what happens between its space and society, given that everything that is social naturally coincides with what spatial (Aprile-Gnisset, 1992). In Colombian cities, in general, there has been an occupation of land (urban and rural) without planning in the medium and long term, individual action and the location of commercial, service and industrial activities have been privileged over residential activity (Castaneda et al., 2023).

A comparison can be made taking into account what was previously stated, an attempt is made to analyze Briceño's vulnerability. "The common problems of this area include informal invasions of the coastal strip, pollution of sea water and rivers, the little presence of green areas, the loss of natural landscapes, forest fires, among others" (GAD San Vicente, 2019 -2023).

Borbón (2016), in his study carried out in Cuba, points out that the vast majority of neighborhoods of informal origin have achieved access to all public services, to a lesser extent to the coverage of equipment and provision of public space. as well as mass transportation systems, their consolidation and possible deterioration being a valid concern. Through this research we aim to highlight the problem of informality, delving into the population to investigate the different determinants that influence it and with these to understand why settlements do not improve the quality of life in any type of community.

Population dynamics and economic activities intervene in the increase in social vulnerability" (GAD Manabí, 2020). With these approaches, the emergence of socioeconomic and spatial informality can be understood, as a result of the lack of urban planning by local governments, which are specifically directed at the already consolidated urban area. Coastal areas have been very attractive for the establishment of the population for different biological, cultural, economic and geographical reasons according to (Freeman et al., 2009).

Based on the aforementioned, in Briceño a proposal is required that constitutes holistic planning, whose orientation allows access to goods and services for priority groups with criteria of relevance, quality and equal opportunities, promoting security and full human development. It is essential to integrate aspects that promote economic reactivation (Reátegui, 2010), consolidating a perspective that aims to contribute to local development and improvement of the quality of life.

It is necessary to understand different concepts and theories appropriate to the topic of exploration, from different perspectives. It will begin by analyzing the concepts of informality, territorial planning and urban expansion; which are part of the main analysis of the research and are part of the branch of urban economics. Finally, the concept quality of life will be studied to support the variables to be analyzed. Informality in cities/metropolitan areas implies two forms of transgressions: with respect to domain aspects and the urbanization process. The first is based on the lack of property titles; the second, in failure to comply with the city's construction standards. Each of them takes shape in different types of informality, in which different agents intervene and which define different forms of urban segregation.

Segregation means distancing and separating population groups from a community; It can take the form of localized – or socio-spatial – segregation (when a sector or social group is concentrated in a specific area of the city, forming socially homogeneous areas) or exclusionary (absence of integration of social groups in spaces common to several groups). Segregation is not exactly a model of coexistence, but rather its denial, that is, a model of radical non-coexistence. Historical examples show that, in practice, segregation leads to discrimination and inequality of rights and duties between communities.

Land prices reveal the difference that a buyer has to pay to avoid falling into a worse situation (Smolka & Amborski, 2003). That is, if the price of urbanized land is inaccessible, households consider informal lots as a better alternative; therefore, low-income households opt for informal lots not because they represent the best price, but because it is their only alternative. Schnell (2019), mentions that both informality and segregation present three-dimensional phenomena such as:

Residential: “In numerous cases, the residential phenomenon is associated with the increase in demand for land in the destination territories, especially in rural interior areas, where irregular parcels have also proliferated considerably” (Valverde, 2019). On the one hand, multiple academics defend “the dispersed city and advocate for the inclusion of the rural world in the enjoyment of social services and facilities” (Fernández García, 2003), while, on the other hand, various authors defend that “the traditional compact city is the most sustainable territorial and urban model” (Ramírez, 2007). In both cases, “irregular occupations that have emerged in an uncontrolled manner in the territory foster social conflict and generate important territorial and environmental imbalances.” (Casado & Mendigorri, 2022)

Territorial: It is a concept that is associated, in turn, with the idea of border, physical, legal, institutional limit. Territoriality can be studied from different perspectives. “In the social sciences, territoriality is normally seen as a political issue, that is, as a strategy to exercise control over resources and people” (Sack, 1986). White (2013). Territory can be understood as “the concrete, empirical, historical manifestation of all the considerations that are made around space on a conceptual level.”

Territory and Society are multidimensional and essentially linked concepts, although today they are examined independently and unidirectionally, separating territory from society and forgetting that both are subject to and established reciprocally. They are, then, structurally and dynamically linked. Belonging to a group with a clearly delimited territory is one of the most attractive options for maintaining an orderly image of the world, capable of offering guidance and security. It may be useful to define benign territoriality and malignant territoriality separately. “Benign territoriality is the use of territories and borders to maintain a feeling of access to a safe space and a specific identity, without creating impermeable borders that minimize communication with other groups.”

Malignant territoriality is the creation of homogeneous territories with impermeable and rigid borders that allow dissociation and projection. Malignant territoriality is a direct obstacle in conflict resolution. Interactive: It bases its foundation on essential services for the population and its constant growth. Common social norms and the presence of strong constraints, such as pressure to conform and little privacy, are characteristics of this network. Many multifunctional networks coexist in large cities. City dwellers construct for themselves a number of spatially dispersed, coexisting networks, rather than belonging to a single local group in the neighborhood. In other words, the diversity of these networks gives more opportunities to deploy points than to satisfy the needs of the population (Hong et al., 2019; Mesgar & Jalilvand, 2017; Suasira et al., 2022).

“There is an interactive character between society and space, with the interconnection between social relations and spatial structures constituting a central focus of research” (Gregory & Urry, 1988). Pérez-Campuzano (2011), mentions that “segregation as an interactive process is not constructed only in terms of residential differentiation, but also in contact with everyday life.” The above produces internal regionalizations in the city or population being analyzed.

Territorial planning (OT) can be defined as “a State policy and a development planning instrument, from a systemic, prospective, democratic and participatory perspective, which guides the appropriate political-administrative organization of the Nation and the spatial projection of policies.” social, economic, environmental and cultural of society, guaranteeing an adequate standard of living for the population and the conservation of the environment, both for current generations and for those of the future” (Lucke, 1999).

Territorial planning is a particularly valuable tool to promote actions in different relevant areas of sustainable development, since its approach considers aspects such as: Poverty and equity: The OT acts as an instrument that allows guiding and promoting public and private investments, in order to contribute to reversing the processes of exclusion and poverty; Productivity of human settlements: The OT prevents and corrects the location of human settlements and productive and social infrastructure; It articulates the agrarian, the industrial, the commercial and the services, both in urban and rural areas; Environment and disaster prevention: The OT ensures the safeguarding of natural resources and protected spaces; reverses the processes of environmental conflicts, deterioration of ecosystems and territorial competitiveness; and promotes policies that regulate the use of the territory and the management of natural resources; Land ownership and tenure: The OT allows, through the cadastre, territorial demarcation, delimiting the borders between administrative units (municipalities, communal lands, etc.), and facilitating the sustainable use of natural resources, as well as biological diversity, the orderly occupation of the territory, conservation of the environment and ecosystems; Governance and citizen participation: The OT promotes processes of greater citizen participation, considering the diverse interests and visions that the actors have about the use and management of the

territory. It stimulates the development of the national territory in a balanced and competitive manner with the participation of public, private and communal actors, through adequate territorial planning (Rivière et al., 2023; Prada-Trigo, 2018; Grahn & Nyberg, 2017).

Urban Sprawl refers to the migration of a population from populated towns and cities to low-density residential developments over more and more rural land. The end result is the expansion of a city and its suburbs over more and more rural land. The importance of space is reaffirmed as having meaning and not simply as the form of crystallization of society on a given territory. Space as social production, as a dialectical relationship between society and nature, has connotations about the ways in which social groups belong to it. According to Clichevsky (2000), “There is an interactive character between society and space, with the interconnection between social relations and spatial structures constituting a central focus of research.”

The quality of life in urban spaces depends on the wealth generated therein and its equitable distribution, but to guarantee this it is necessary that the entire resident population of cities enjoy the same rights, freedoms and opportunities, and thus reduce the inequality gap between the population (Jiménez Barbosa & González Borrero, 2014).

2 Materials and Methods

It is established that the research is framed under an inductive approach, since it will start from the particular to the general, forming a practical scenario, specifically considering variables and categories on the quality of life of the households in the Briceño sector, with the purpose of establish and analyze the impact of the regularization of this vulnerable area. The research has a descriptive scope, with a field, experimental and transectional research design.

For its part, it is field, in perspective that the information will be obtained in a real environment, with techniques and instruments to acquire information directly from those involved. Likewise, it is experimental, because variables are operated and finally, it is transectional, because the information will be collected by the research in real-time; Therefore, it seeks to identify the neighborhoods before and after regularization through the collection and exploration of information in proportion to quantitative and qualitative variables that translate the concept of quality of life.

Theoretical methods are used in the construction and development of scientific theory, the method used to advance this research is based on inductive-deductive. While empirical methods allow obtaining data, taken from practice and discernment, that is, participant observation and survey. For the development of the structured survey, the social, economic and demographic characteristics of the Briceño beach profile are analyzed, emphasizing different questions regarding the economic activity of households, bone time, mobility and the relationship between them.

3 Results and Discussions

The research seeks to examine the regularization of the vulnerable zone in the quality of life of households, due to the importance that this indicator presents as a form of well-being of the population, San Vicente is the youngest Canton in the province of Manabí, created as On November 16, 1999, after long efforts by citizens, after the popular elections on May 21, 2000, the first cantonal council was formed. It has 2 parishes: San Vicente, the cantonal capital as an urban parish and Canoa, as a rural parish, in addition to 42 rural communities. Among its are: Briceño, Nuevo Briceño, Salinas, La Estancia, Portovelo, La Cabuya, San Felipe, El Bálsamo, El Tillal, San Miguel de Briceño, La Fortuna, La Chonera, Cerezal, Rosa Blanca, La Esperanza, La Envidia . (GAD San Vicente, 2019-2023). Shown in figure 1.

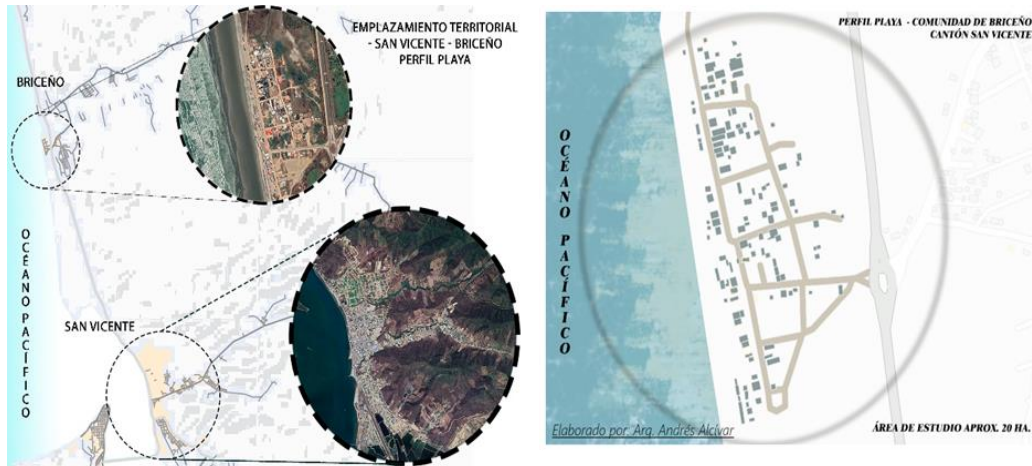


Figure 1. San Vicente parish communities

Boca de Briceño beach, Manabí, Ecuador, is the study area and is included within the following latitude and longitude coordinates: -80.439606, -0.5219757. Located 8 km north of San Vicente, this resort has white sand where you can enjoy the sun and exquisite waves of the sea. Data was collected through surveys of 30 heads of families in the Briceño beach profile of the San Vicente canton, province of Manabí; in the period from March to June 2023. The corresponding permits were managed, the confidentiality and anonymity of the families will be respected, in accordance with the rules and principles of research bioethics. The state of the homes was investigated and the results are shown in Figure 2.

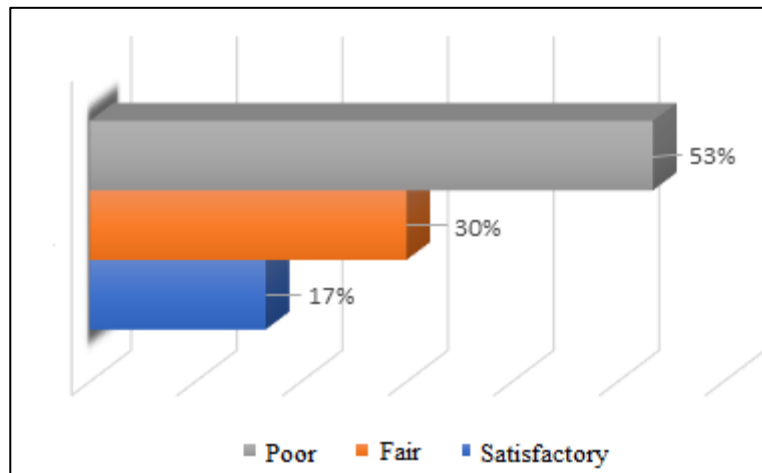


Figure 2. State of the home

As can be seen, the majority have a precarious and regular condition that influences people's quality of life. The housing status of the 30 families surveyed, 53%, which corresponds to 16 families, live in a precarious state, 30%, that is, 9 families live in a regular state, and finally 17%, equivalent to the remaining 5 families. They live in a satisfactory housing condition. It was found that 87% of them did not have title to their home. It can be seen in Figure 3 about the Title of ownership of each home where 87% of the families, equivalent to 26, responded that they do not have a title, while 13%, corresponding to 4 families, do have a title to the property. The houses that had drinking water service were investigated; Figure 3 shows the results obtained.

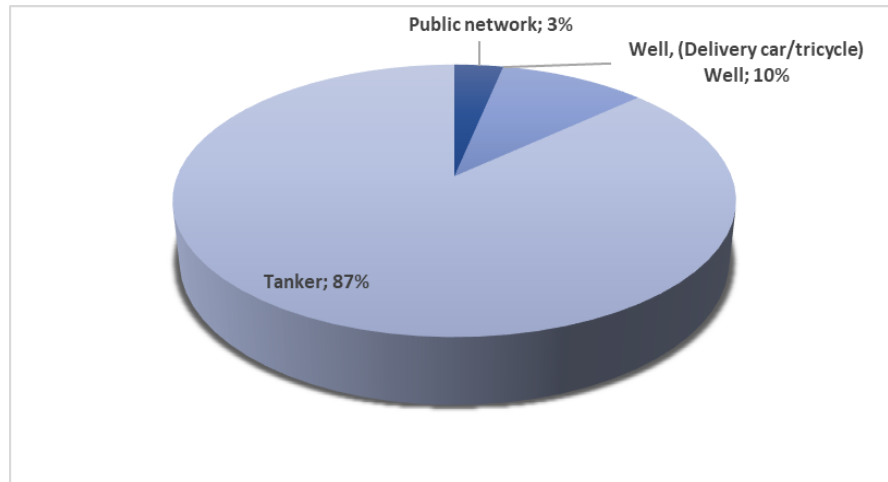


Figure 3. Potable drinking water service.

According to figure 3, where the percentage of those who have water in different households is analyzed, it is shown that 87%, that is, 26 families obtain it from the tanker; 3 families, 10%, obtain it from the well and 3%, equivalent to one family, acquire it from the public network. An investigation was conducted on the availability of toilet facilities, the results are shown in Figure 4

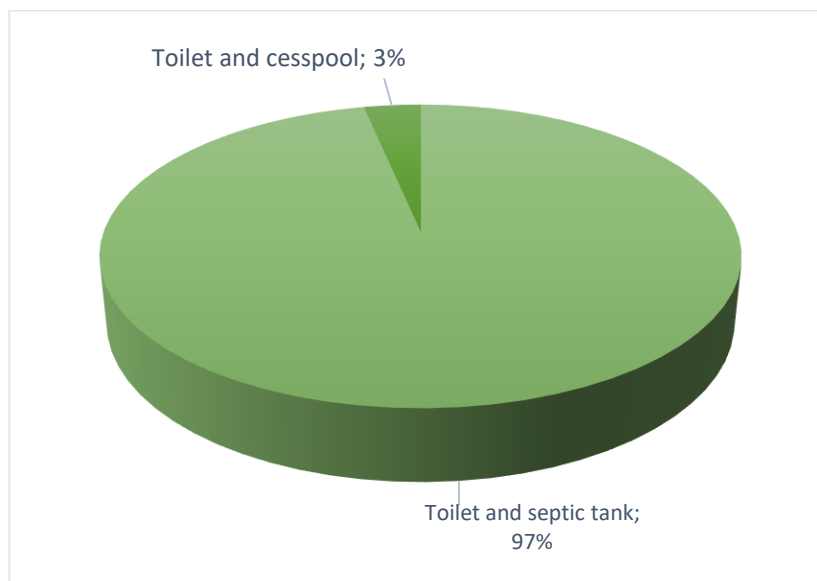


Figure 4. toilet service.

As can be seen, the toilet service of the 30 families surveyed showed that 97%, corresponding to 29 families, used a toilet and a septic tank, while 3%, equivalent to one family, used a toilet and a blind well. The results presented show that the territory studied presents difficulties in obtaining adequate basic services.

Results found in the surveys

About sociodemographic characteristics, We found a female population where the age between 0-15 years prevails with 15 people from the families surveyed while a smaller number are over 65 years old. In the male sex, the age between 26-45 years prevails with 15 people surveyed and a smaller number are over 65 years old.

Alcívar-Intriago, A. A., Valencia- Castro, F. A., Zambrano-Gómez, M. G., Moreira-Castro, S. A., & Palacios-Dueñas, A. K. (2024). Determinants that influence the informality of the vulnerable area of the Briceño-San Vicente Beach profile. International Research Journal of Management, IT and Social Sciences, 11(5), 190–200. <https://doi.org/10.21744/irjmis.v11n5.2468>

- The occupations of the heads of each family stand out the most with 40% equivalent to 12 people; is Tourist Server, followed by 6 respondents, which corresponds to 20% Fisherman, and among the least surveyed we have, with 3% each, which is a single person, Accountant, Teacher and Guard.
- On the main access road to the home we have that 47% corresponding to 14 people enter their homes through a path of compacted sand, 27% that is, 8 families through a gravel road/dirt street, 13% which are 4 families using a paved road, 10% equivalent to 3 families using a paved or cobbled road/street and finally 3%, that is, 1 family using a path.
- In the construction materials of the home (Floor/Walls/Roof); stands out with a percentage of 33%, which is equivalent to 10 homes built with Concrete/Brick/Zinc and another 33% with Wood/Cane-bamboo/Zinc, followed by constructions with Concrete/Cement/Tile with 10% corresponding to 3 homes, Thus with the same percentage the constructions with Earth/Cane/Zinc and finally with a percentage of 7% each that are 2 homes the constructions with Concrete/Cement/Zinc and those with Wood/Wood/Zinc.

Discussion

The study was carried out in the Briceño-San Vicente beach profile, in the period from March to June 2023. The characteristics of housing, basic services, roads and the quality of life of the population were analyzed. It focused on the inhabitants of the vulnerable area in order to analyze the main determinants that influence its population. There were no conflicts during data collection between the different families. [Castells \(1989\)](#), agrees with other studies in citing that the causes of informality are: “education, age, gender, marital status and economic income.” This is why the present study assumed several related determinants in order to understand the probable causes and indicators of informality in the Briceño beach profile, where the percentages studied coincide with the alternatives seen and analyzed in other cases.

[Aguilar & Escamilla \(2015\)](#), mention that the so-called spaces of poverty commonly generate “patterns of socio-spatial exclusion” which are important from the point of view of social connection since in geographically and socially unequal spaces the benefits are diminished. capacities of the population to mobilize, study, have access to health services and see increased insecurity. Unlike the spaces integrated by a logic of continuous growth and articulated with the center, characteristic of the industrialization stage, the current population under study is disarticulated as there is an absence of unity between the elements that compose it. That is to say, “the spaces of production, services and housing are clearly disconnected from each other”, mentioned in the article by [Connolly \(2009\)](#), which is consistent with the research carried out in the Briceño profile.

In accordance with the approach of [Espino-Méndez \(2008\)](#), for whom it is better that “the interaction between different groups occurs in neutral areas, such as the workplace or public space.” Resulting in larger cities, with self-segregated, informal neighborhoods and with the majority of the population living in conditions of poverty even in contiguous spaces. Urban segregation is a topic that in recent years has been mentioned by various authors in Latin America, being addressed from multiple aspects, ranging from residential to ethnic and social. For [Sabatini \(2006\)](#), “residential segregation corresponds to the agglomeration in space of families of the same social status, regardless of how we define social differences.”

Studies have been carried out such as those by [Núñez Méndez & Ramírez Jaramillo \(2002\)](#); [Pacheco \(1996\)](#), which analyze the relationship between different variables and the probability that a household is in a situation of poverty, such as household size, age, sex and educational level of the head of the household, the number of working hours of the head of the household, the branch of activity in which he or she works, or unemployment. In the study carried out we can find that in the homes of Briceño the occupation of heads of households is that of tourist server with 36% since it is a beach profile and they are dedicated to this work and with 21% they are fishermen.

In statistical terms, according to DANE (2009), the incidence of poverty, measured as the percentage of poor over the total population, was around 46% for the year 2008, while approximately 6 out of every 10 employed generate their income in the informal sector of the labor market. (MESEP, 2009). [Nuñez \(2002\)](#); [Perry et al., \(2008\)](#), mention in their studies that “not all informal workers belong to poor households, nor do all formal workers belong to non-poor households, since the informal sector is characterized by being quite heterogeneous.” Statistical information for several countries indicates that there is a close relationship between poverty and the informal sector.

For [Capron & Arellano \(2018\)](#), “mobility strategies, accessibility and social networks that intertwine, mark the ability of people and places to connect and access the city.” This fact may mean being segregated or not. In the Briceño case we can see that several of the characteristics of the neighborhood coincide with segregation and informality.

According to (Secretary of Risk Management, 2014), in 1998, through the National Navy, a housing program was created that is currently named Nuevo Briceño, where the affected families were relocated due to the loss of their homes. on Briceño Island, after the El Niño Phenomenon of 1997 - 1998. All properties were considered Risk areas, and the Municipal GAD of San Vicente is responsible and the regulatory entity for the use and management of the land, as established according to the law, such as: CONSTITUTION OF THE Republic of Ecuador, Title V Territorial Organization of the State in its article 238, COOTAD in its articles. 3, 55, 57 and 140, making it clear that municipalities at the national level enjoy autonomy, administrative and financial organization, use and management of the territory, among others... in the case of the Briceño island of the San Vicente canton, a adequate territorial control regulations, as well as prohibitions on the use of land, not suitable for residential or similar areas, for this reason there was no control over residential, commercial, gastronomic, and similar constructions, leaving aside the raw experience of the flood and landslide disaster caused by the El Niño phenomenon, in the 90's

Currently, the GADMC San Vicente does not execute plans, programs, projects, prioritization of the annual municipal budget, and its respective Annual Operational Plan (POA), directed to Briceño Island, for the reason and excuse that it is located in a high-risk zone, (GAD SAN VICENTE) which turns the study area into a territorial, segregated and vulnerable polygon, determining a precariousness in citizen care and a never-ending lack of basic services, it is highlighted that the GADMC San Vicente does not grants construction permission in said territorial polygon, but does not restrict or prohibit residential constructions that lie in the vulnerable area (Hong et al., 2016; Ruá et al., 2019; Kumar et al., 2016; Oppio et al., 2015; Villegas-González et al., 2017).

It is worth highlighting the shortcomings of local territorial planning, which makes it ineffective for the territory and therefore there is no regularization of informal settlements, causing constant social, spatial - residential segregation, since these neighborhoods are characterized by being inhabited by lower social strata. , which has remained a constant and has not been modified given the conditions of the neighborhood and vulnerability to risks according to the RESOLUTION OF PROHIBITION BY REGULATION No. SNGR-005-2011, signed in Quito on May 23, 2011. Thus highlighting that the right to adequate housing was recognized as part of the right to an adequate standard of living in article 25 of the Universal Declaration of Human Rights of 1948 and in article 11.1 of the International Covenant on Economic, Social and Cultural Rights of 1966. (UN, 2021)

Territorially: it is related to the fact that 87% of the properties do not have property titles, since the GAD San Vicente does not grant them, but it does not prevent the informal construction that has been generated for more than two decades in the beach profile of Briceño. Interactively: we realize that 87% of these homes acquire water through the tanker service (water without treatment) and 97% use toilets with drainage into a septic tank, inducing contamination of the soils of the beach profile. For this reason, we conclude that the provision of public services and infrastructure remains weak in Briceño. Considering that it is important that there is continuous territorial control of non-regularized informal settlements, so that the quality of life of households don't get worse. The necessary socioeconomic and demographic characteristics are provided to determine that in the Briceño beach profile there should be no informal settlements as stipulated in the Prohibition Resolution by Regulation No. SNGR-005-2011, signed in Quito on May 23, 2011.

4 Conclusion

Among the main vulnerability factors that do not allow a good quality of life in the population of Briceño we have; the formation of informal settlements, which is an imminent fact, deteriorated by the poor access to housing for the lower-income sectors and the weak urban planning policies, increasing the problem with basic services, not provided by the Municipal GAD which should be of continuous prevalence and priority within the population. The main determinants that influence the informality of the vulnerable area of the Briceño beach profile are: demographic characteristics, employment and income, housing and basic services, security. Of which we rescue some of the most important as mentioned (Schnell, 2019), about the three-dimensional phenomena of informality.

Residentially, the homes of Briceño have similar infrastructures and in housing, 53% of the families live in a precarious state, 30% in a regular state and finally the remaining 17% live in a satisfactory housing state; Through this we determine that the state of the home is bad or precarious, without architectural spatial organization, there are no standardized setbacks between homes, control of the construction standards in force in Ecuador is also absent (NEC; Ecuadorian Construction Standard, 2015). , everything described regarding the housing.

Conflict of interest statement

The authors declared that they have no competing interests.

Statement of authorship

The authors have a responsibility for the conception and design of the study. The authors have approved the final article.

Acknowledgments

We are grateful to two anonymous reviewers for their valuable comments on the earlier version of this paper.

References

- Aguilar, A. G., & Escamilla, I. (Eds.). (2015). *Urban segregation and spaces of exclusion: Examples from Mexico and Latin America*. UNAM Institute of Geography.
- Aprile-Gnisset, J. (1992). *The Colombian City: 19th and 20th Centuries*.
- Borbón, WL (2016). Urban informality and neighborhood improvement processes. *Scientific Journal of Architecture and Urbanism* , 37 (3), 27-44.
- Capron, G., & Arellano, S. G. (2018). Las escalas de la segregación y de la fragmentación urbana. *Revista Trace*, (49), 65-75.
- Casado, DL, & Mendigorri, AM (2022). Illegal subdivisions in Spain: expansion and effects of irregular urban planning in the environment of the regulated city. In *Annals of Geography of the Complutense University* (Vol. 42, No. 1, p. 157). Complutense University of Madrid.
- Castañeda, H., Escue, M., & Aranda, E. (2023). “A lot of people there were undocumented, or at least looked like me”: illegality, visibility and vulnerability among immigrant young adults in Florida. *Journal of Cultural Geography*, 40(2), 118-142.
- Castells, M. (1989). *The informational city: Information technology, economic restructuring, and the urban-regional process* (Vol. 1, pp. 76-77). Oxford: Blackwell.
- Clichevsky, N. (2000). *Informality and urban segregation in Latin America: an approach* . Cepal.
- Connolly, P. (2009). The rules of disorder: inhabiting the metropolis. *EURE (Santiago)* , 35 (105), 137-142.
- Cutter, S. L., & Finch, C. (2008). Temporal and spatial changes in social vulnerability to natural hazards. *Proceedings of the national academy of sciences*, 105(7), 2301-2306.
- Espino-Méndez, NA (2008). Urban segregation: A brief theoretical review for urban planners.
- Fernández García, A. (2003). Patterns of post-industrial urban growth: from rural urbanization to the diffuse city. *Ería: Quarterly journal of geography* .
- Freeman, P.K., Martin, L.A., Linnerooth-Bayer, J., Warner, K., & Pflug, G. (2009). Natural disaster risk management. *Inter-American Development Bank (IDB)*. *sfsl* .
- Grahn, T., & Nyberg, L. (2017). Assessment of pluvial flood exposure and vulnerability of residential areas. *International Journal of Disaster Risk Reduction*, 21, 367-375. <https://doi.org/10.1016/j.ijdrr.2017.01.016>
- Gregory, D., & Urry, J. (1988). Social relations and spatial structures. *Science and Society*, 52(3).
- Hong, L., Zhong, X., Ouyang, M., Tian, H., & He, X. (2019). Vulnerability analysis of public transit systems from the perspective of urban residential communities. *Reliability Engineering & System Safety*, 189, 143-156. <https://doi.org/10.1016/j.ress.2019.04.018>
- Hong, W., Jiang, R., Yang, C., Zhang, F., Su, M., & Liao, Q. (2016). Establishing an ecological vulnerability assessment indicator system for spatial recognition and management of ecologically vulnerable areas in highly urbanized regions: A case study of Shenzhen, China. *Ecological indicators*, 69, 540-547. <https://doi.org/10.1016/j.ecolind.2016.05.028>
- Jiménez Barbosa, WG, & González Borrero, JI (2014). Urban quality of life: a proposal for its evaluation. *Journal of social studies* , (49), 159-175.
- Kumar, S., Raizada, A., Biswas, H., Srinivas, S., & Mondal, B. (2016). Application of indicators for identifying climate change vulnerable areas in semi-arid regions of India. *Ecological indicators*, 70, 507-517. <https://doi.org/10.1016/j.ecolind.2016.06.041>
- Lucke, O. (1999). Conceptual and methodological basis for the generation of land use scenarios. Land use scenarios for Costa Rica in 2025.
- Mesgar, M. A. A., & Jalilvand, P. (2017). Vulnerability analysis of the urban environments to different seismic scenarios: residential buildings and associated population distribution modelling through integrating dasymmetric mapping method and GIS. *Procedia engineering*, 198, 454-466. <https://doi.org/10.1016/j.proeng.2017.07.100>
- Núñez Méndez, J., & Ramírez Jaramillo, JC (2002). *Determinants of poverty in Colombia: recent years* . ECLAC.
- Núñez, J. (2002). Informal employment and tax evasion in Colombia. *Archives of Economics* , 210 , 1-30.
- Oppio, A., Corsi, S., Mattia, S., & Tosini, A. (2015). Exploring the relationship among local conflicts and territorial vulnerability: The case study of Lombardy Region. *Land Use Policy*, 43, 239-247. <https://doi.org/10.1016/j.landusepol.2014.11.006>
- Pacheco, HV (1996). *Well-being Profiles of Vulnerable Groups in Cali-Yumbo* (No. 4127).

- Pérez-Campuzano, E. (2011). Urban socio-spatial segregation. Contemporary debates and implications for Mexican cities. *Demographic and urban studies*, 26 (2), 403-432.
- Perry, G., Maloney, W., Arias, O., Fajnzylber, P., Mason, A., Saavedra-Chanduvi, J., & Bosch, M. (2007). Informality: escape and exclusion. *World Bank Studies on Latin America and the Caribbean*, 1.
- Prada-Trigo, J. (2018). When he woke up, the crisis was still there. Consequences of the economic crisis in the city of Madrid and effects on territorial vulnerability. *Geoforum*, 97, 54-65. <https://doi.org/10.1016/j.geoforum.2018.10.012>
- Ramírez, FM (2007). Low-density residential production in the province of Barcelona (1985-2001). In *The low-density city: logic, management and containment* (pp. 51-84).
- Reategui, A. (2010). The importance of housing quality: determinants of the quality of social housing.
- Rivière, M., Lenglet, J., Noirault, A., Pimont, F., & Dupuy, J. L. (2023). Mapping territorial vulnerability to wildfires: A participative multi-criteria analysis. *Forest Ecology and Management*, 539, 121014. <https://doi.org/10.1016/j.foreco.2023.121014>
- Ruá, M. J., Huedo, P., Civera, V., & Agost-Felip, R. (2019). A simplified model to assess vulnerable areas for urban regeneration. *Sustainable Cities and Society*, 46, 101440. <https://doi.org/10.1016/j.scs.2019.101440>
- Sabatini, F. (2006). Social segregation of space in Latin American cities.
- Sack, R. (1986). *Human territoriality: its theory and history*. Cambridge: Cambridge University Press.
- Schnell, I. (2019). Segregation in everyday life spaces: a conceptual model. In *Studies in segregation and desegregation* (pp. 39-65). Routledge.
- Smolka, M., & Amborski, D. (2003). Value capture for urban development: an inter-American comparison. *EURE (Santiago)*, 29 (88), 55-77.
- Suasira, I. W., Intara, I. W., Sutapa, I. K., Santiana, I., Wibawa, I., & Yasa, I. (2022). Structure Analysis of Building Functions Transition on The Earthquake Area five Reviewed from Costs and Time Schedule. *International research journal of engineering, IT & scientific research*, 8(1), 7-16.
- Valverde, AP (2019). Irregular enclaves in non-urbanizable land and sustainability: the Andalusian case. In *Regeneration and planning for sustainable cities: experiences in America, Morocco and Spain* (pp. 58-85). Department of Urban Planning and Territorial Planning.
- Villegas-González, P. A., Ramos-Cañón, A. M., González-Méndez, M., González-Salazar, R. E., & De Plaza-Solórzano, J. S. (2017). Territorial vulnerability assessment frame in Colombia: Disaster risk management. *International journal of disaster risk reduction*, 21, 384-395. <https://doi.org/10.1016/j.ijdrr.2017.01.003>
- White, R. (2013). The conceptual contours of green criminology. In *Emerging issues in green criminology: Exploring power, justice and harm* (pp. 17-33). London: Palgrave Macmillan UK.